



Improving Linkage to Care and Treatment among men Lessons Learned from Swaziland's Comm Link Program

Makhosazana Dlamini, Deputy Director PSI
Swaziland

July 23, 2018

psi.org/getcloser

#GETCLOSER 

Background

- Population of 1.1 million people
- According to SHIM2 data (2016):
 - Eswatini has highest HIV prevalence: 27% for 15+ age (females 32.5%; males 20.4%)
 - 85% of PLHIV know their status; 87% on ART; and 92% virally suppressed
 - HIV incidence at 1.4%
- Prior to 2015, 37% referred from community settings enrolled in HIV care within 6 months of diagnosis; 63% lost after diagnosis – *Retrospective study conducted by CDC Atlanta, ICAP and PSI*
Need for Community Linkages Program (CommLink):
- Link between community and health facility HTS interventions
- Identify LTFUs

psi.org/getcloser

#getCLOSER 

CommLink Services Package

1. Community-based HTS models – HTS Counselor

2. Post-test counseling provided - Expert Client (EC)

- Psychosocial support and motivational & informational counseling, Identification of and referral to the most appropriate HIV care facility
- Escort to mobile, community-based clinical services

3. Mobile, Community-based HIV Clinical Services – Nurse

- WHO clinical staging
- PIMA CD4 testing at point of diagnosis
- Provision of cotrimoxazole preventive therapy (CPT) – 2 weeks supply

4. Individualized, Brief Case Management Services – Expert Client

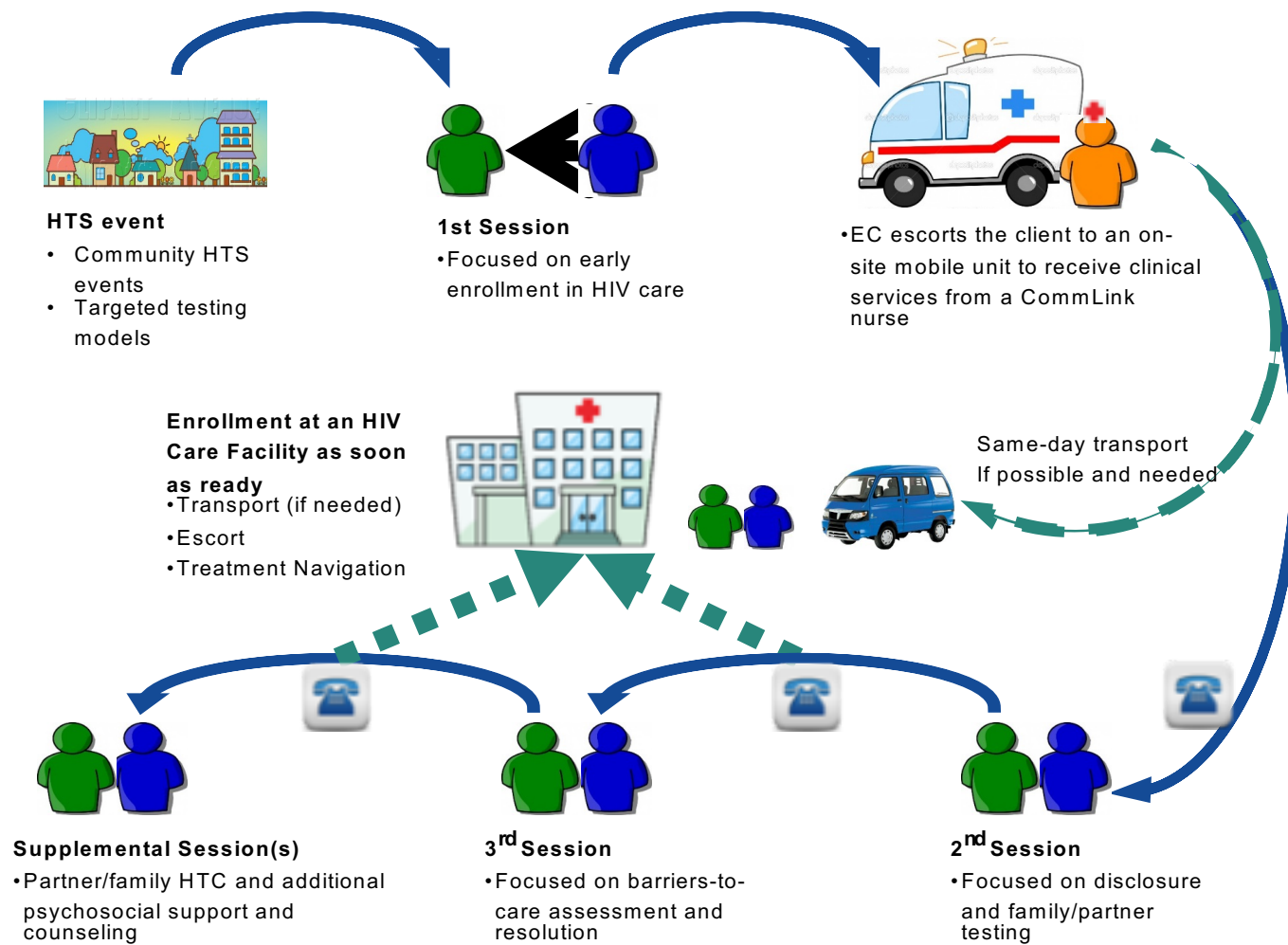
- 3 face-to-face counseling sessions; Index-client tracing for partners and exposed children; follow up calls and facility visit escort

psi.org/getcloser

#getCLOSER



CommLink Intervention Model



Programme Partnerships

- **MoH**
 - Coordination and authorization – dedicated personnel to oversee CommLink from MoH
 - Sensitization and cooperation of HIV care and treatment facility personnel
- **PSI Swaziland**
 - Programme implementation, monitoring, and evaluation
- **U.S CDC - Swaziland and Atlanta**
 - Financial and Technical support on programme development, implementation, and evaluation.
- **PEPFAR-funded partners supporting HIV care and treatment in facilities**
 - Sensitization, mentoring, and supporting integration of community-based services, and enrollment and retention of CommLink clients in HIV care and treatment

psi.org/getcloser

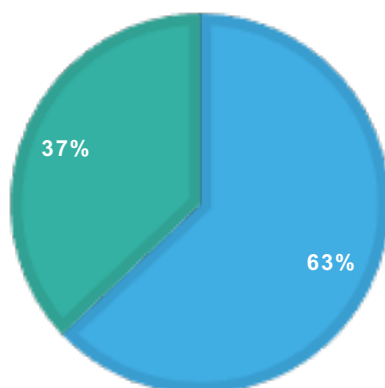
#GETCLOSER



Results: PLHIV identified by sex, commlink/non-commmlink (Jan – Dec '17)

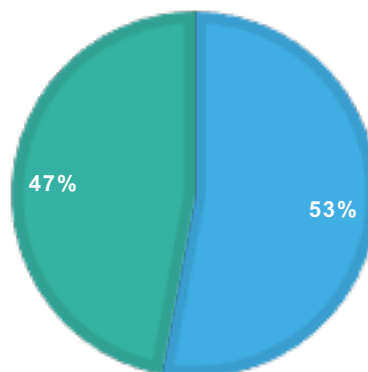
NATIONAL N= 26397

females males



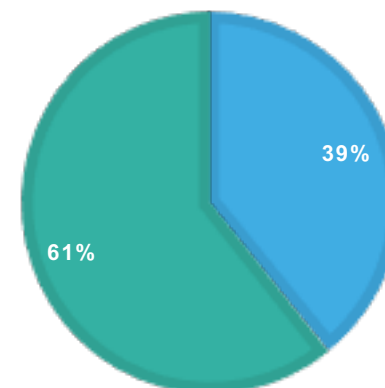
PSI NON-COMMLINK N=4341

females males



COMMLINK N=887

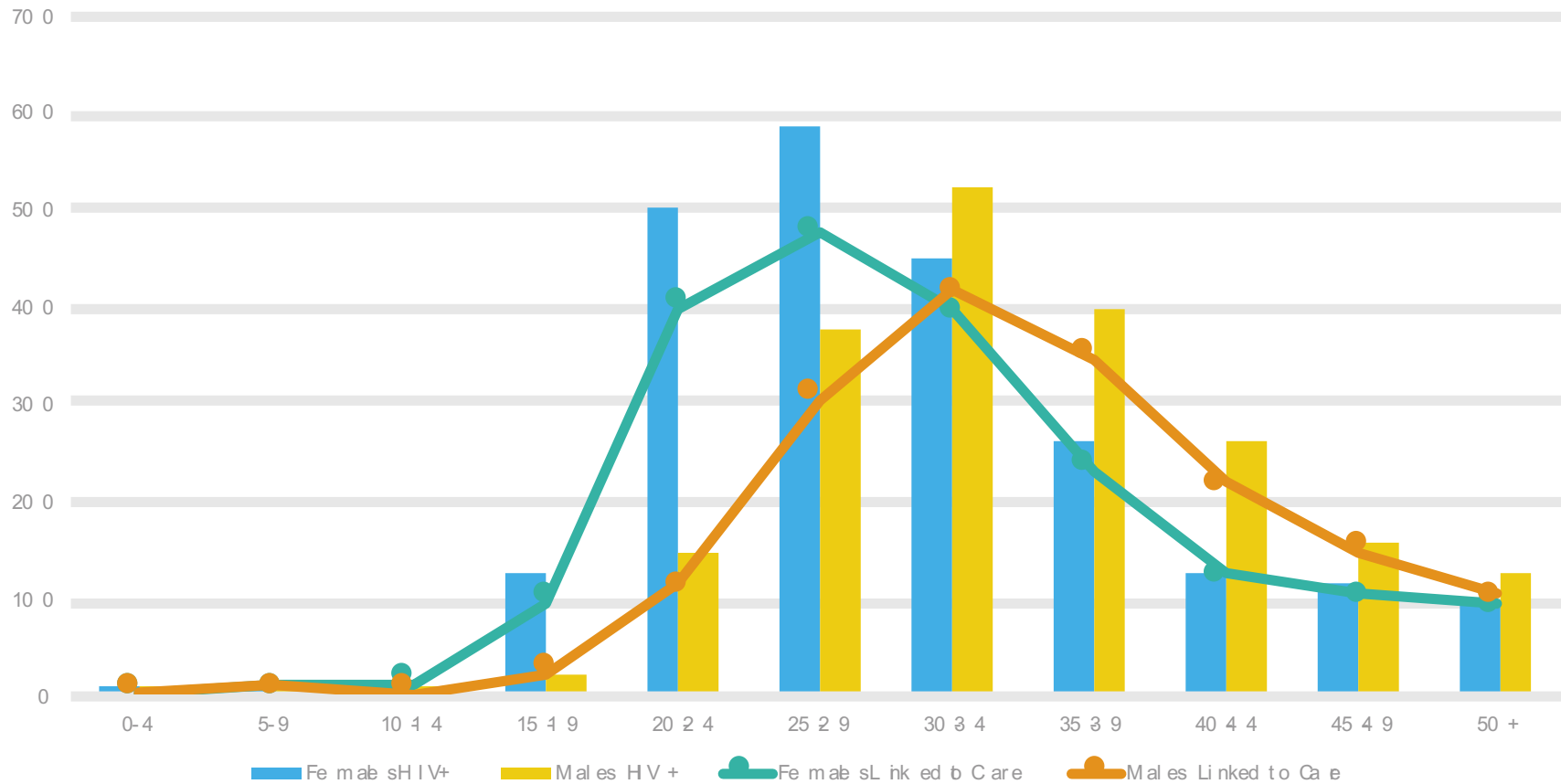
females males



psi.org/getcloser

#GETCLOSER 

Linkages by sex and age (Jan - Dec 2017)



psi.org/getcloser

#CLOSER



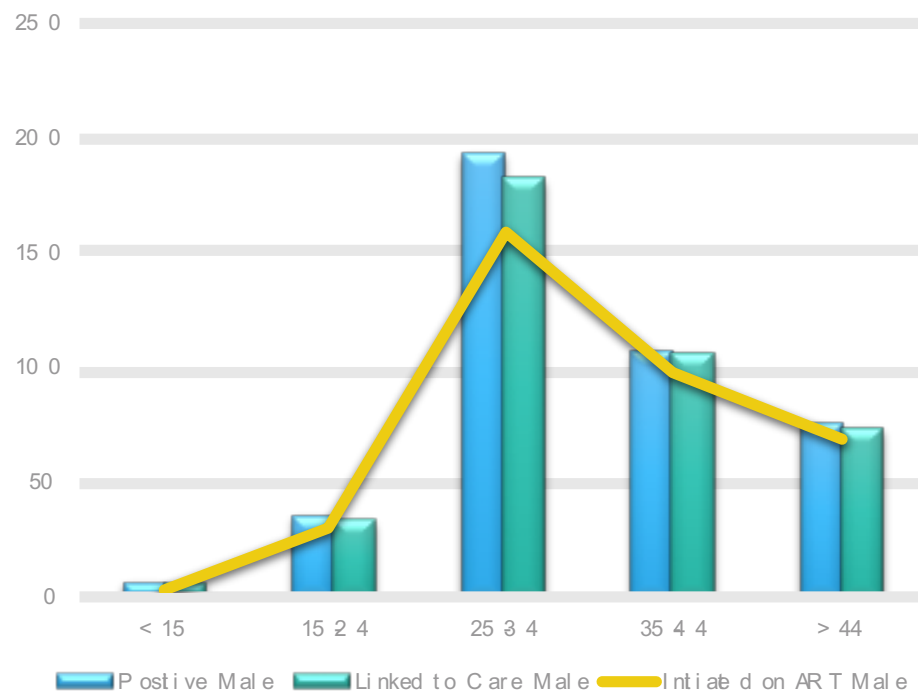
n=650

Linkages to care = Males 96%; Females 95%

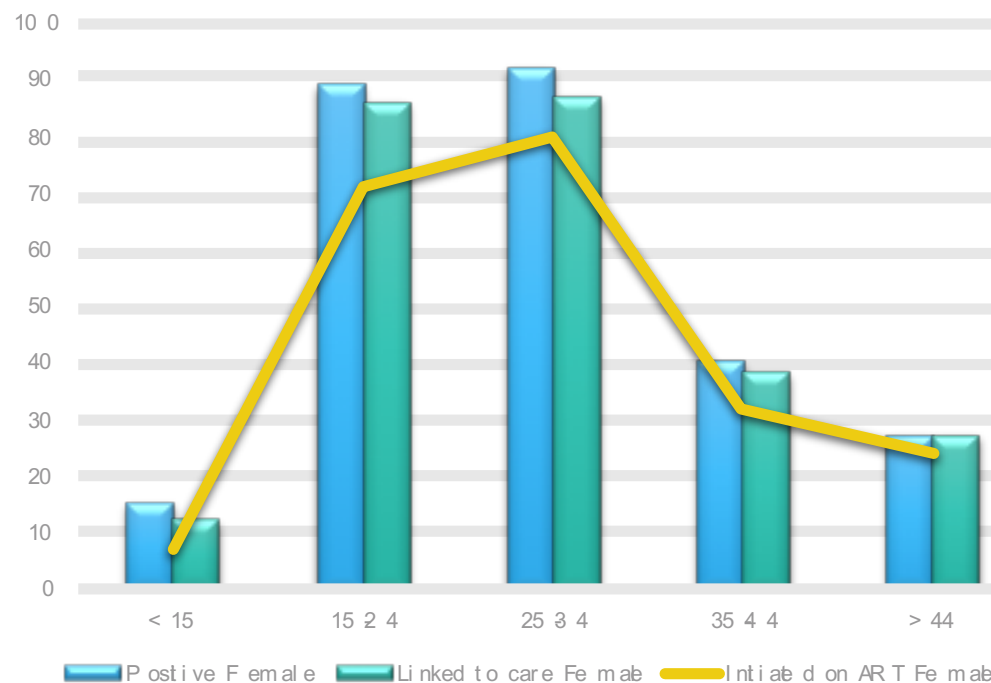
Linkages to ART = Males 86%; Females 82%

**In care after case closure = Males 92%;
Females 94%**

Linkages males by age group



Linkages females by age group

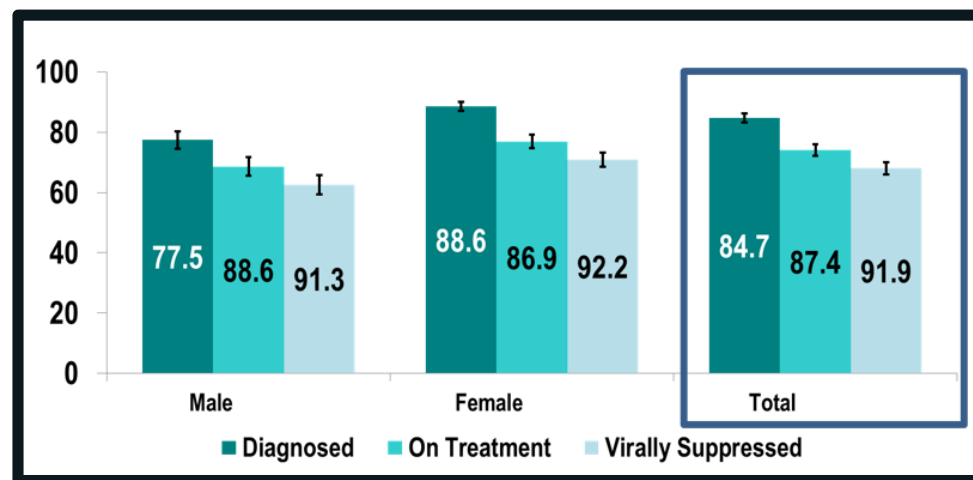


psi.org/getcloser

#CLOSER 

Conclusions

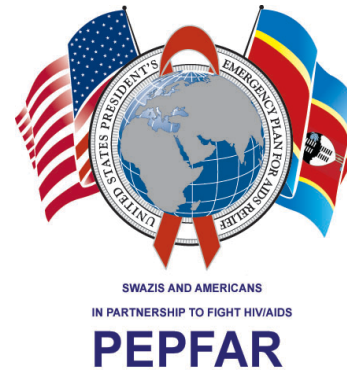
- Increased uptake of services by males 25 – 34 years through CommLink
- Contributing factors for the increase:
 - Expert client role in,
 - Testimonials
 - Escort services
- Higher ART initiation rate with men



psi.org/getcloser

#GETCLOSER 

Acknowledgements



psi.org/getcloser

#getCLOSER 



Keep in
touch



PSIhealthylives



@PSIimpact



psi.org/getcloser



klittle@psi.org



psi.org/getcloser

#CLOSER

